



SonicWALL SSL VPN Series

SECURE REMOTE ACCESS

Easy-to-use, Affordable and Clientless Secure Remote Access

- Seamless integration behind virtually any firewall
- Clientless connectivity
- Unrestricted concurrent user tunnels
- NetExtender technology
- Granular policy configuration controls
- SonicWALL Virtual Assist
- Personalized portal
- Enhanced layered security in a SonicWALL environment
- Tokenless two-factor authentication
- Context-sensitive help

In recent years, there has been an increased dependence on mobile workers. This has prompted a need for providing secure remote access to network resources as well as remote control PC access. SonicWALL® provides a solution that meets the needs of organizations with demanding remote workforce requirements. SonicWALL SSL VPN security solutions, for networks of any size, are simple to deploy and even easier to use for a fraction of the price of most other SSL VPN solutions. Unlike solutions that charge a per-tunnel licensing fee, SonicWALL SSL VPN solutions have no restrictions on the number of concurrent user tunnels for remote access, allowing organizations to scale their remote access connectivity as they grow.

Remote access has never been so simple to use. Mobile employees only require a standard Web browser to log into a Web portal which provides access to e-mail, files, applications and internal Web sites. For even more powerful capabilities such as seamless, secure access to any resource on the corporate network including servers and complex or home-grown applications, the appliances transparently push a downloadable thin client (NetExtender) to the user's desktop or laptop.

Remote support is also easy to implement using SonicWALL® Virtual Assist.* It is a clientless tool that enables a technician to assume control of a customer's PC or laptop in order to provide assistance. As a result, service can be provided on-demand while keeping costs low.

Features and Benefits

Seamless integration behind virtually any firewall enables organizations to leverage the existing network infrastructure without the need to purchase additional hardware.

Clientless connectivity removes the need for a pre-installed or "fat" VPN client, thus freeing administrators from the tedious and costly task of installing and updating a client on users' PCs.

Unrestricted concurrent user tunnels, unlike per-tunnel licensing, significantly reduces the costs associated with deploying a scalable secure remote access solution.

NetExtender technology provides enhanced capabilities such as access to additional resources, services and applications on the corporate network.

Granular policy configuration controls enable network administrators to create policies that "lock down" a user to specific applications/resources and prevent unauthorized access to them.

SonicWALL Virtual Assist* enables technicians to provide secure on-demand assistance to customers while leveraging the existing authentication infrastructure.

A **personalized portal**, provided through a customizable Web interface, displays only those resources that are available to the user based on company policy.

Enhanced layered security is enabled when deployed alongside a SonicWALL network security appliance which utilizes powerful deep packet inspection technology to scan traffic for malicious threats such as viruses, worms, Trojans and spyware.

Tokenless two-factor authentication provides enhanced protection against key loggers by combining a unique one-time password, generated by the SSL VPN appliance and sent to a remote user's mobile device or e-mail address, with the user's network user name and password.

Context-sensitive help is provided throughout the Web-based administrative interface and end-user portal, increasing management flexibility and ease-of-use.

*Additional license required; Only available as a software add-on module for the SSL-VPN 2000 and SSL-VPN 4000

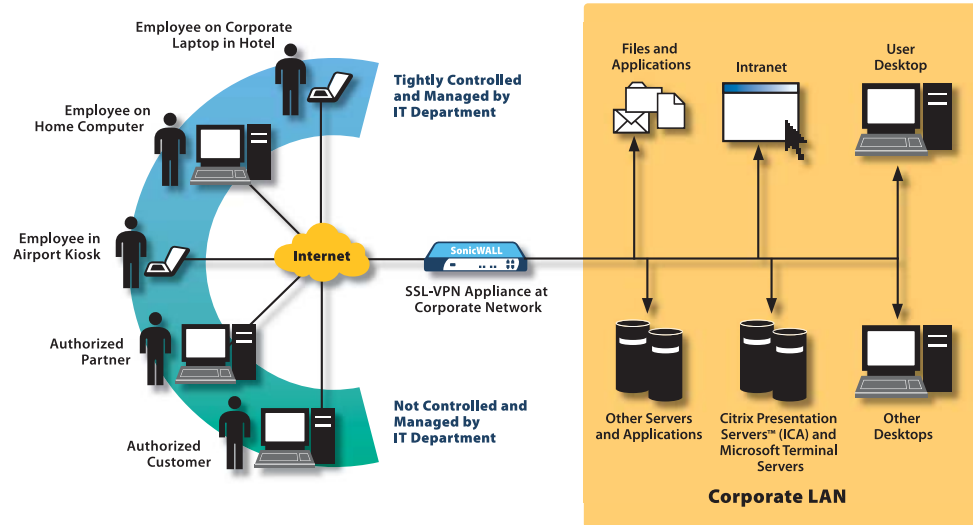


SSL VPN: Secure Remote Access for Any Authorized User

Key Features

The SonicWALL SSL VPN Series extends secure remote access beyond remote offices and corporate controlled laptops out to network environments and remote computers that are not controlled and managed by the corporate IT department.

Additionally, granular access controls enable the network administrator to provide remote access to specific and defined resources not only employees, but also to trusted partners and customers.



Secure
remote access
that's easy to
deploy, use and
won't break
your budget

Awards



(SSL-VPN 200)



(SSL-VPN 2000)

Certifications



(SSL-VPN 200/2000/4000)



(SSL-VPN 2000/4000)

Access the Resources You Need from Anywhere, When You Need Them

SonicWALL SSL VPN solutions can be configured to provide users with simple, secure and clientless remote access to a broad range of resources on the corporate network.

Using only a standard Web browser, users have access to:

- Files and file systems (Includes support for FTP and Windows Network File Sharing)
- Web-based applications
- Microsoft Outlook Web Access, Lotus Domino Web Access and other Web-enabled applications
- HTTP and HTTPS intranets

SonicWALL NetExtender technology provides expanded access to:

- E-mail access through native clients residing on the user's laptop (Microsoft Outlook, Lotus® Notes, etc.)
- Commercial and home-grown applications
- Flexible network access as granted by the network administrator

Added flexibility for access to:

- Applications installed on desktop machines or hosted on an application server
- Full remote control of desktop or server machines
- Terminal Services (RDP), VNC, Telnet and SSH
- Citrix Presentation Server™ (ICA)*

Cost effective alternative to traditional remote access and remote support products:

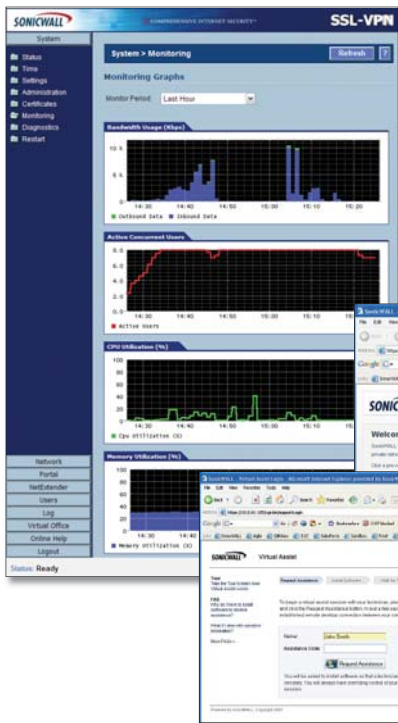
- Access to full remote control of the desktop—however, unlike more traditional VNC and RDP, this requires no client software installation
- Access to a customer's laptop or desktop, by simply using SonicWALL Virtual Assist**, a Web browser that seamlessly pushes a "thin" client—unlike traditional remote support tools that require pre-installation

*Available only on the SSL-VPN 2000 and 4000

** Additional license required; Only available as a software add-on module for the SSL-VPN 2000 and SSL-VPN 4000

Simple to Use, Simple to Manage

SonicWALL SSL VPN solutions feature intuitive Web interfaces that simplify remote access and policy management from any location. Context-sensitive help is provided throughout the administrative and end-user portals to enhance usability. Additionally, the SSL VPN Series can be managed globally using the SonicWALL Global Management System (GMS).[†] Using GMS, administrators can now monitor the up/down status of each SonicWALL SSL VPN appliance and use one-click login to access the management interface.



Secure, Easy-to-use Web Management Interface

Administrators will find SonicWALL SSL VPN solutions extremely simple to deploy and manage. An easy-to-use graphical user interface makes it simple to configure, monitor and update the appliance and user policies. Additionally, the capability for granular policy configuration provides complete control over individual user access to specific network resources.

Personalized Portal Experience

Remote users require only a standard browser to launch a personalized Web portal. The user simply points the browser to a specific URL and the SSL VPN portal automatically displays only those resources that are available to that individual based on company policy.

GMS Management

The administrator can now configure the SSL VPN appliance to send heartbeat and syslog messages to a designated SonicWALL Global Management System (GMS 4.0 or higher).[†]

Multiple SSL VPN appliances can be centrally managed from GMS. The administrative interface of an SSL VPN appliance can be accessed via one click in the GMS interface.

SonicWALL Virtual Assist*[†]

The administrator can easily configure and license the module from the Administrative portal. The technician portal is used to manage and schedule the support queue. The easy-to-use user portal guides a customer through the simple steps of requesting and receiving support.

[†]Sold separately * Additional license required; Only available as a software add-on module for the SSL-VPN 2000 and SSL-VPN 4000

Seamless Integration Behind Virtually Any Firewall

Behind third-party firewalls

SonicWALL SSL VPN appliances integrate seamlessly into any network topology and can be easily deployed alongside any third-party firewall as a secure remote access solution. This enables IT administrators to leverage the existing network infrastructure without the need to purchase additional hardware.

Enhanced security when used in a SonicWALL network environment

When deployed with a SonicWALL network security appliance running SonicWALL Gateway Anti-Virus, Anti-Spyware and Intrusion Prevention Service*, SonicWALL SSL VPN solutions provide enhanced network integration and security benefits.

Endpoint security enforcement

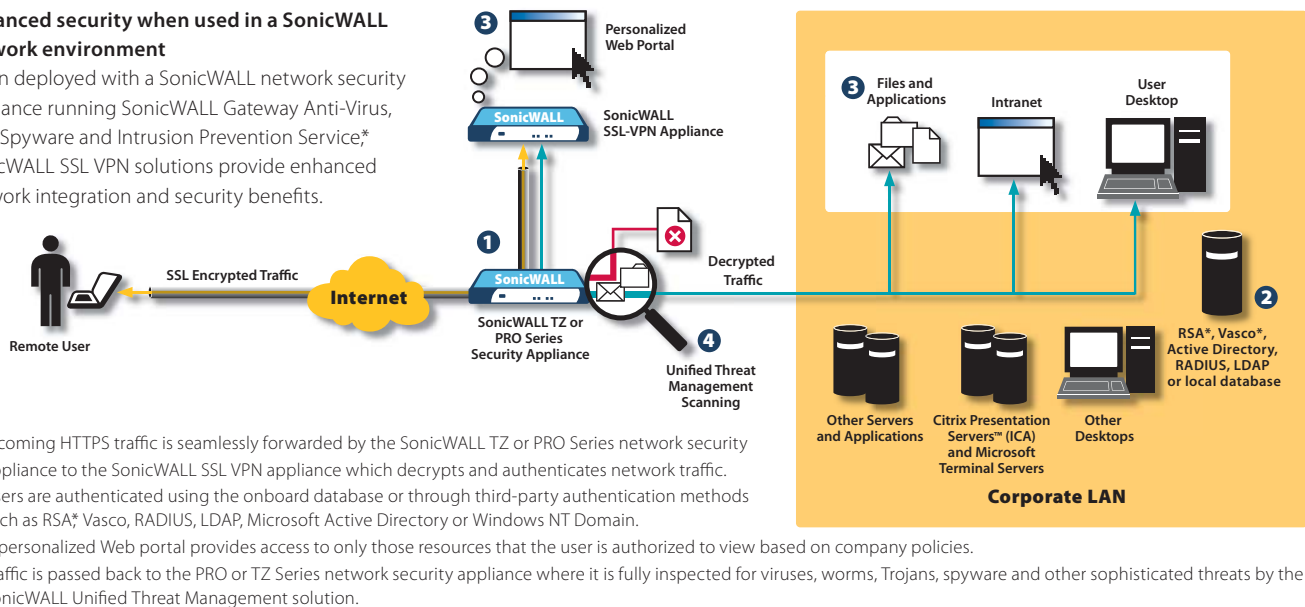
By deploying SonicWALL NetExtender and Enforced Client Anti-Virus and Anti-Spyware[†] on managed PCs, administrators can configure policies that require every computer accessing the network to have the most recent version of anti-virus and anti-spyware software installed and active.

[†]Sold separately

Leveraging existing infrastructure

SonicWALL Virtual Assist* can tightly integrate with an existing LDAP, AD, NT Domain, Radius, RSA or Vasco infrastructure. Alternately, the local database and the built-in tokenless two factor authentication may be used.

* Additional license required; Only available as a software add-on module for the SSL-VPN 2000 and SSL-VPN 4000



*Available only on the SSL-VPN 2000 and 4000

Specifications

SonicWALL SSL VPN Series



SonicWALL SSL-VPN 200 (US/Canada) 01-SSC-5946

SonicWALL Dynamic Support 8x5 (1 Year) 01-SSC-5642

SonicWALL Dynamic Support 8x5 (2 Years) 01-SSC-6244

SonicWALL Dynamic Support 8x5 (3 Years) 01-SSC-6245

SonicWALL Dynamic Support 24x7 (1 Year) 01-SSC-5643

SonicWALL Dynamic Support 24x7 (2 Years) 01-SSC-6246

SonicWALL Dynamic Support 24x7 (3 Years) 01-SSC-6247



SonicWALL SSL-VPN 2000 (US/Canada) 01-SSC-5952

SonicWALL Dynamic Support 8x5 (1 Year) 01-SSC-5646

SonicWALL Dynamic Support 8x5 (2 Years) 01-SSC-6236

SonicWALL Dynamic Support 8x5 (3 Years) 01-SSC-6237

SonicWALL Dynamic Support 24x7 (1 Year) 01-SSC-5647

SonicWALL Dynamic Support 24x7 (2 Years) 01-SSC-6238

SonicWALL Dynamic Support 24x7 (3 Years) 01-SSC-6239



SonicWALL SSL-VPN 4000 (US/Canada) 01-SSC-5960

SonicWALL Dynamic Support 8x5 (1 Year) 01-SSC-6248

SonicWALL Dynamic Support 8x5 (2 Years) 01-SSC-6249

SonicWALL Dynamic Support 8x5 (3 Years) 01-SSC-6250

SonicWALL Dynamic Support 24x7 (1 Year) 01-SSC-6251

SonicWALL Dynamic Support 24x7 (2 Years) 01-SSC-6252

SonicWALL Dynamic Support 24x7 (3 Years) 01-SSC-6253

Performance

SSL-VPN 200	Recommended for organizations with 50 or fewer employees
Concurrent User License:	Unrestricted
Recommended Maximum Concurrent Users:	10
SSL-VPN 2000	Recommended for organizations with 500 or fewer employees
Maximum allowable concurrent Virtual Assist technicians:	4
Concurrent User License:	Unrestricted
Recommended Maximum Concurrent Users:	50
SSL-VPN 4000	Recommended for organizations with 500 or more employees
Maximum allowable concurrent Virtual Assist technicians:	25
Concurrent User License:	Unrestricted
Recommended Maximum Concurrent Users:	200

Key Features

Applications Supported	
Proxy	Citrix (ICA)* HTTP, HTTPS, FTP, SSH, Telnet, RDP, VNC, Windows* file sharing (Windows SMB/CIFS)
NetExtender	Any TCP/IP based application: ICMP, VoIP, IMAP, POP, SMTP, etc.
Encryption	DES (128), 3DES (128, 256), AES (128, 192, 256), ARC4 (128), MD5, SHA-1
Authentication	RSA* Vasco, One-time Passwords, Internal user database RADIUS, LDAP, Microsoft, Active Directory, Windows NT Domain
Multiple Domain Support	Yes
Fine Grain Access control	At the user, user group and network resource level
Session Security	Inactivity timeouts prevent unauthorized use of inactive sessions
Certificates	
Server	Self-signed with editable common name and imported from third parties
Client	Optional client certificates supported*
Cache Cleaner	Optional. Upon logout all cached downloads, cookies and URLs downloaded through the SS tunnel are erased from the remote computer
Client PC Operating Systems Supported	
Proxy	All operating systems
NetExtender	Windows 2000, 2003, XP, Vista
Web Browsers Supported	Microsoft Internet Explorer, Firefox Mozilla
Personalized Portal	The remote user sees only those resources that the administrator has granted access to based on company policy
Management	Web GUI (HTTP, HTTPS), Send syslog and heartbeat messages to GMS (4.0 and higher)
Usage Monitoring	Graphic monitoring of memory, CPU, users and bandwidth usage*
Logging	Detailed logging in an easy-to-read format, Syslog supported e-mail alerts
Single-Arm Mode	Yes
SonicWALL Virtual Assist*	Connection to remote PC, use of chat and FTP tools

Hardware

Hardened Security Appliance	
SSL-VPN 200	Yes
SSL-VPN 2000	Yes
SSL-VPN 4000	Yes
Cryptographic Hardware Acceleration	
SSL-VPN 200	Yes
SSL-VPN 2000	Yes
SSL-VPN 4000	Yes
Interfaces	
SSL-VPN 200	(5) 10/100 Ethernet
SSL-VPN 2000	(4) 10/100 Ethernet, (1) Serial port
SSL-VPN 4000	(6) 10/100 Ethernet, (1) Serial port
Processors	
SSL-VPN 200	SonicWALL security processor, cryptographic accelerator
SSL-VPN 2000	x86 main processor, cryptographic accelerator
SSL-VPN 4000	P4 Celeron main processor, cryptographic accelerator
Memory (RAM)	
SSL-VPN 200	128 MB
SSL-VPN 2000	512 MB
SSL-VPN 4000	1 GB
Flash Memory	
SSL-VPN 200	16 MB
SSL-VPN 2000	128 MB
SSL-VPN 4000	128 MB
Power Supply	
SSL-VPN 200	20W, 12VDC, 1.66A
SSL-VPN 2000	Internal
SSL-VPN 4000	Internal
Max Power Consumption	
SSL-VPN 200	10.4 W
SSL-VPN 2000	48 W
SSL-VPN 4000	108 W
Total Heat Dissipation	
SSL-VPN 200	35.6 BTU
SSL-VPN 2000	163.7 BTU
SSL-VPN 4000	368.3 BTU
Dimensions	
SSL-VPN 200	7.45 x 4.55 x 1.06 in
SSL-VPN 2000	18.92 x 11.56 x 2.69 cm
SSL-VPN 4000	17.00 x 10.00 x 1.75 in
SSL-VPN 4000	43.18 x 25.40 x 4.45 cm
SSL-VPN 4000	17.00 x 13.25 x 1.75 in
SSL-VPN 4000	43.18 x 33.66 x 4.45 cm
Weight	
SSL-VPN 200	3.00 lbs
SSL-VPN 2000	1.36 kg
SSL-VPN 2000	14.80 lbs
SSL-VPN 2000	6.71 kg
SSL-VPN 4000	18.50 lbs
SSL-VPN 4000	8.39 kg
Major Regulatory Compliance	FCC Class A, ICES Class A, CE, C-Tick, VCCI Class A, MIC, NOM, UL, cUL, TUV/GS, CB
Environment	40-105* F, 5-40* C
Humidity	10-90% non-condensing
MTBF	
SSL-VPN 200	9.0 years
SSL-VPN 2000	11.2 years
SSL-VPN 4000	9.2 years

* Available only on the SSL-VPN 2000 and 4000

SonicWALL Value-added Security Services

SonicWALL SSL VPN solutions integrate seamlessly behind virtually any firewall. The traffic to a SonicWALL SSL VPN appliance deployed alongside a SonicWALL Network Security appliance, can be fully inspected for content-based threats such as viruses, spyware and Trojans prior to being forwarded to its final destination on the network. Support for the SonicWALL Virtual Assist module is included in the support purchased for the appliance. For more information on SonicWALL security services, including gateway anti-virus, anti-spyware, intrusion prevention and content filtering, please visit our Web site at <http://www.sonicwall.com>.

WTI Systems

1741 South Big Bend Blvd.
St. Louis, MO 63117

314 754 1932 (Office)
314 754 1939 (Fax)

