

FEATURE HIGHLIGHTS:

Data Access

Query Tools – Develop queries with standard ODBC or SQL tools including Microsoft® Excel, Crystal Reports and Microsoft® Access.

Report Capabilities – With iData, you can request information across disparate divisions (or databases). The data you request is dynamically pulled into organized, accurate Smart Views that are easily interpreted and conform to your unique system configuration. iData does the work for you, eliminating the need to decipher complicated, time-consuming data dictionaries.

User-Defined Schedules – You can define when and how frequently iData will extract data from the FundWare core database to Smart Views with SQL Server 2000.

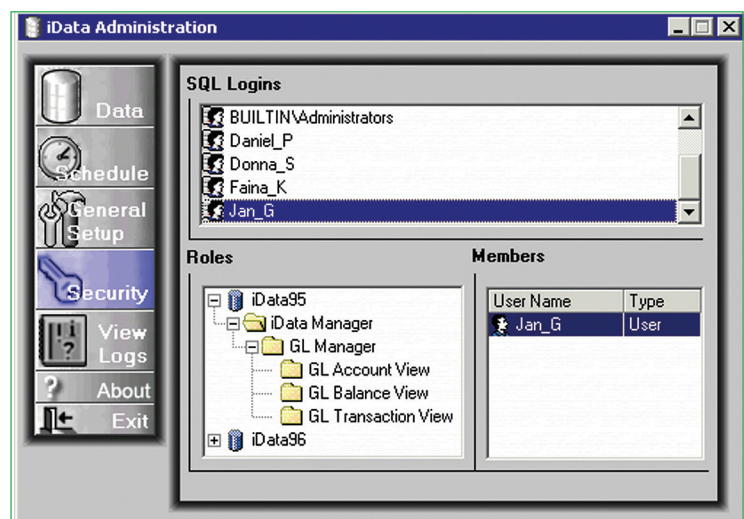
Security – Through an easy-to-use graphical interface, you can assign user security access to a Smart View, all Smart Views within a module, or all iData Smart Views.

Smart Views

Categorize the data with logical, clearly defined names to avoid the typical complexity of a data dictionary. You can also automatically organize complicated data based on your FundWare configuration.

iData is Kintera FundWare's intelligent analysis and reporting tool, available with FundWare Enterprise Edition.

iData eliminates the burden of deciphering complicated data dictionaries, providing you with quick access to your financial data. You can easily create reports from well-organized Smart Views, which conform to your unique system configuration and allow you to report across divisions.



Use the hierarchical interface to define security for your iData views.

Call toll-free: 800.551.4458
 or Email: fwinformation@kintera.com
6430 S. Fiddler's Green Circle, Suite 500
Greenwood Village, CO 80111

www.fundware.com